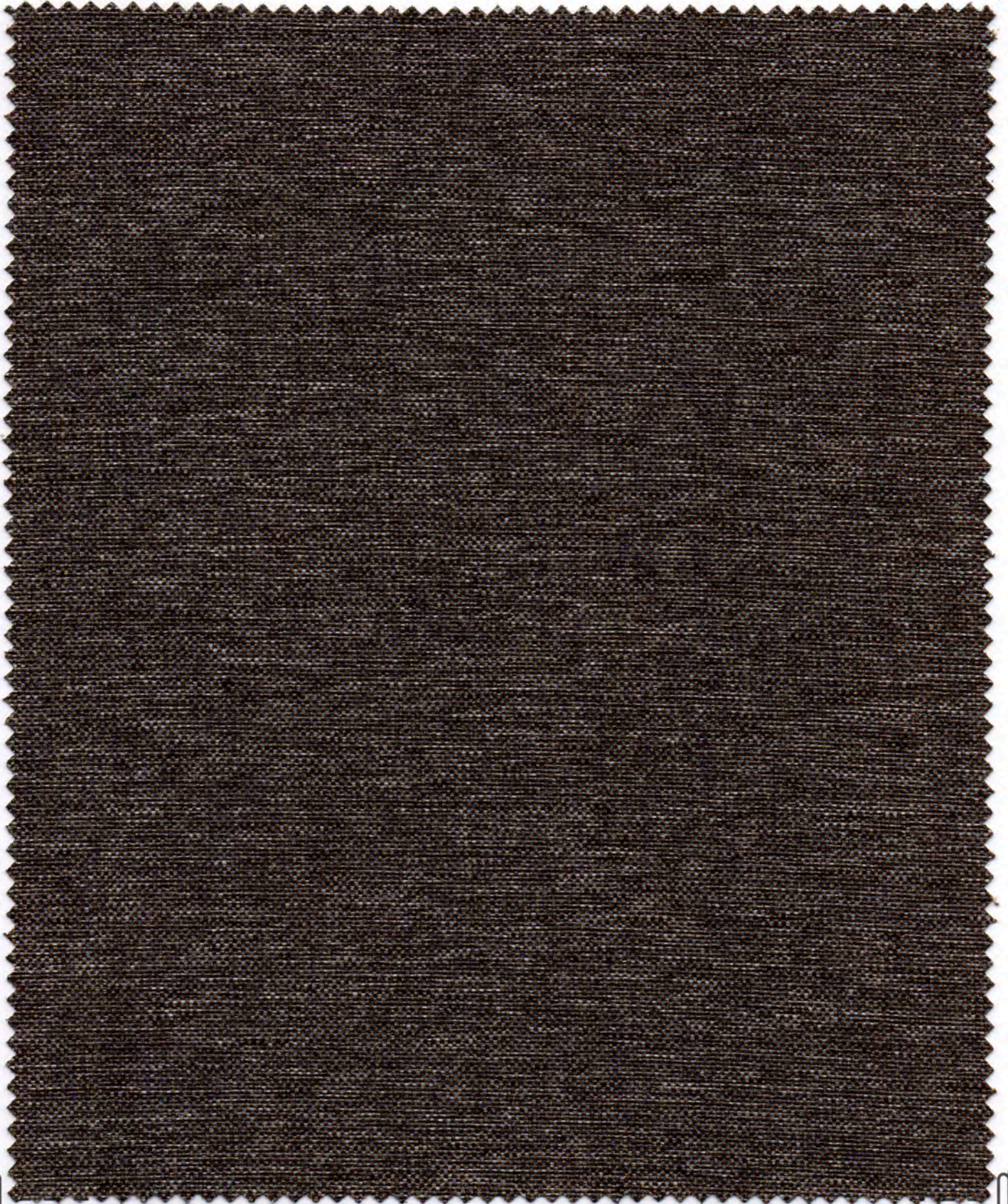
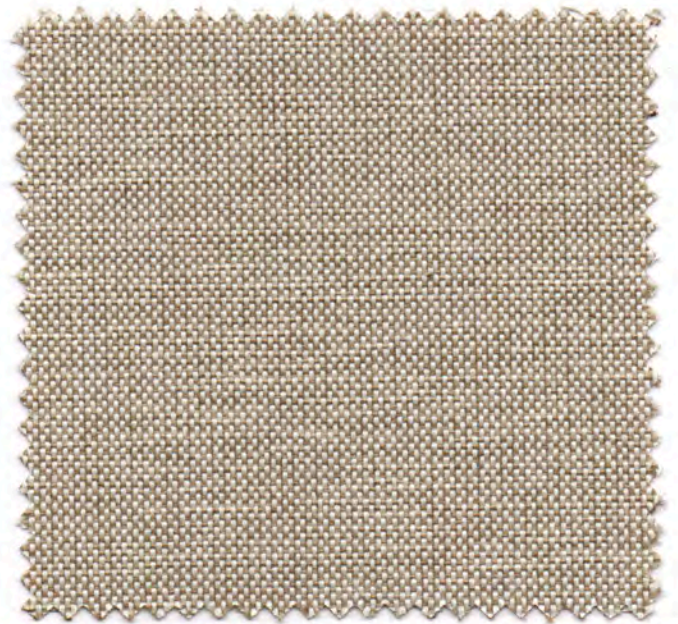


ANGEL





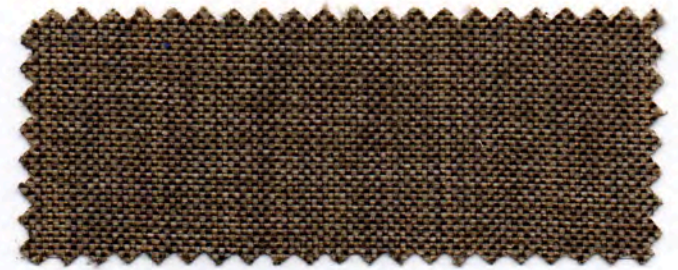
54 / 400



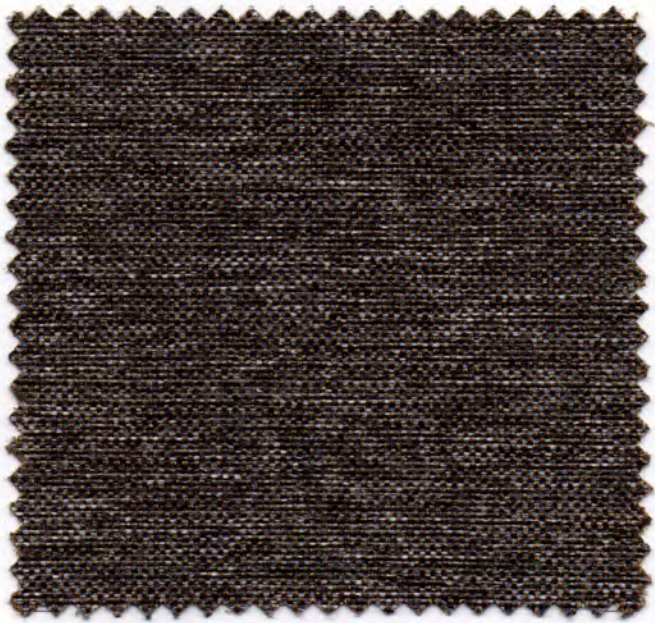
53 / 401



50 / 402



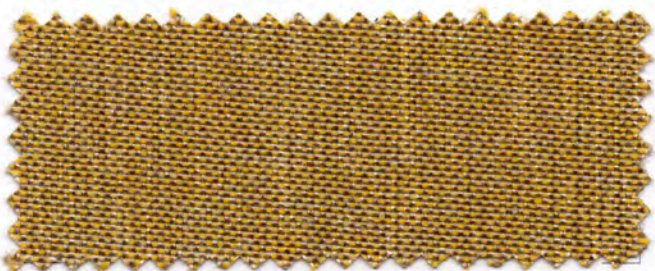
45 / 404



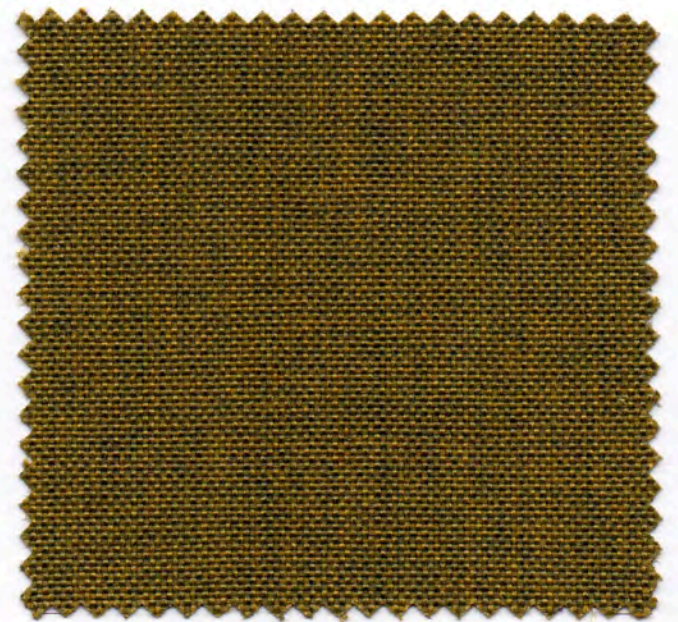
43 / 302



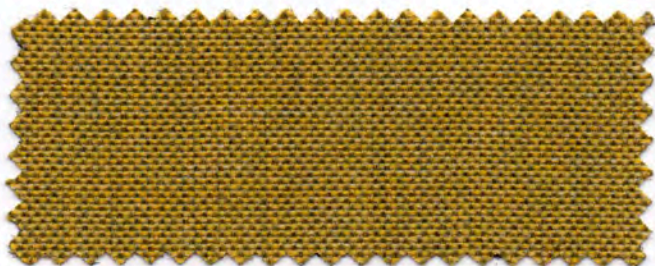
20 / 405



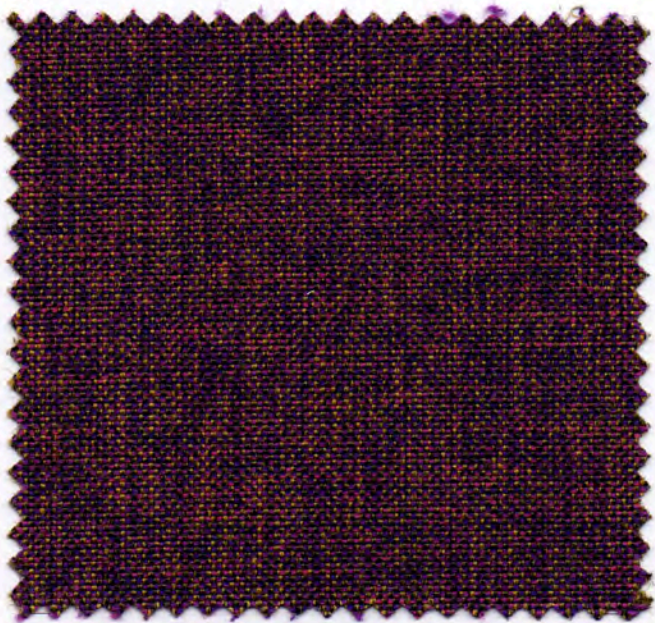
46 / 500



09 / 800



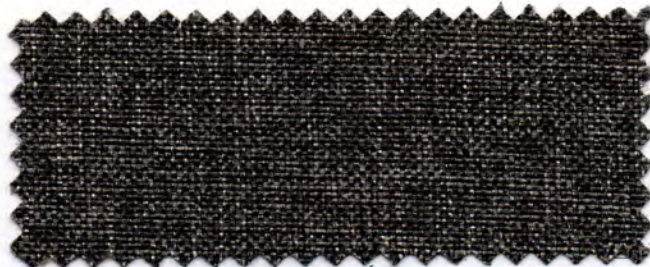
41 / 502



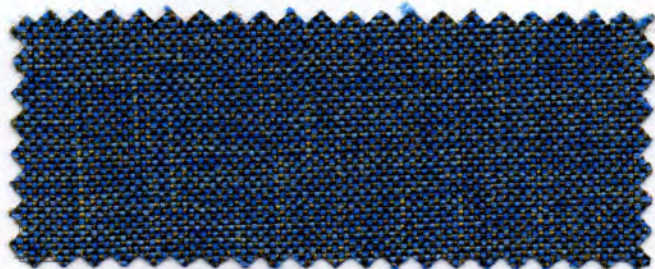
38 / 002



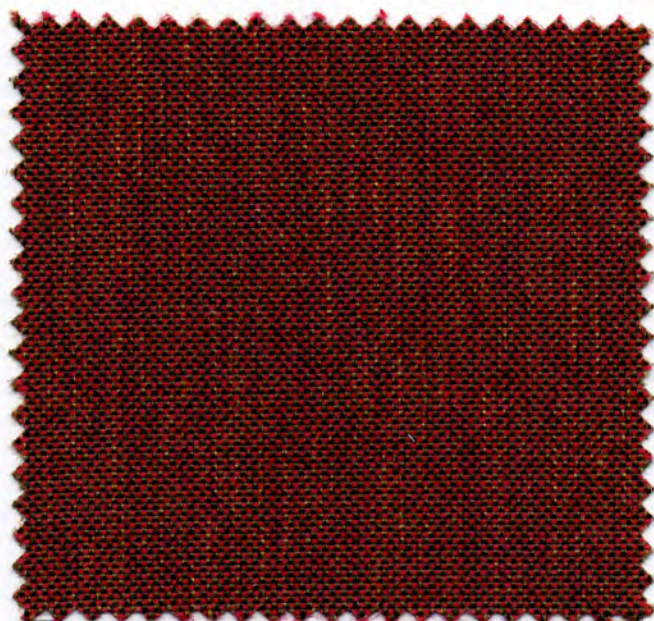
57 / 200



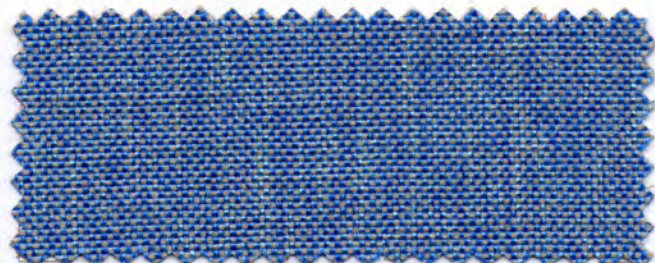
56 / 201



39 / 700



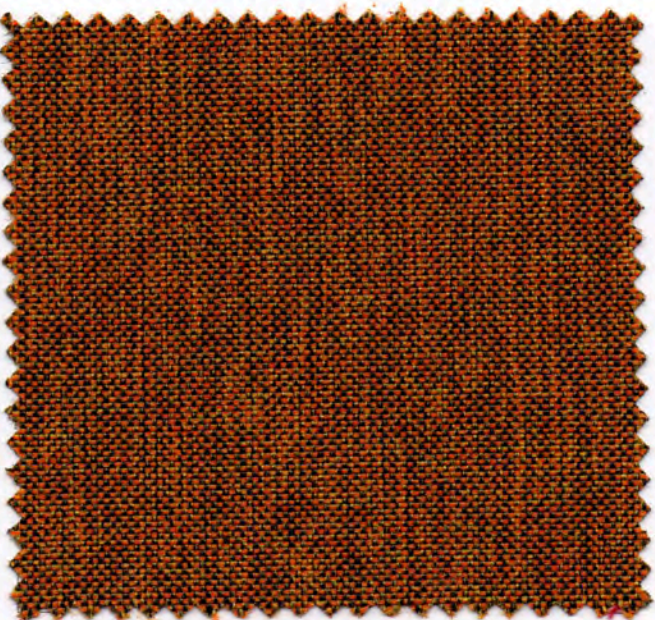
36 / 300



55 / 701



35 / 305



14 / 501



30 / 307



caratteristiche tecniche - technical details		
composizione composition	100% PP FR (Nativa)	
altezza width	140 cm	
peso weight	228 gr/m ² ± 5%	
solidità delle tinte allo sfregamento color fastness to rubbing crock meter - ISO 105 X12	secco / dry 5 umido / wet 4/5	
solidità delle tinte alla luce artificiale color fastness to artificial light xeno - ISO 105 B02	5/6	
resistenza al pilling pilling resistance ISO 12945-2	5	
resistenza all'abrasione abrasion resistance martindale - ISO 12947-2	100.000 cicli / rubs (end point)	
resistente a resistant to	questo filato è: idrorepellente - antistatico anallergico - antibatterico - irrestingibile this yarn is: water repellent - antistatic hypoallergenic - antibacterial - no-shrink	
norme di manutenzione cleaning		
nota bene please note	asciugare a bassa temperatura drip dry - low temperature	
ATTENZIONE WARNING	articolo non idoneo all'uso esterno/outdoor not suitable for external/outdoor use	
resistenza al fuoco (la resistenza al fuoco dipende dal tipo di schiuma utilizzata) fire retardant (flame retardant performance is dependent upon the foam used)	Italia Italy	UNI 9175 Class 1IM
	Europa Europe	EN 1021:2006 - 1 EN 1021:2006 - 2
	Inghilterra England	BS 5852 IS 11 (CRIB 5)
	Stai Uniti U.S.A.	California TB 117:2013
	Nautico Nautical	FTP Code 307(88):10 Annex 1 Part 8
<p>Questi valori sono dati a titolo indicativo e in buona fede e non possono considerarsi in alcun caso vincolanti. L'impiego del prodotto deve essere valutato in base a ciò che si deve realizzare. Non si risponde del suo utilizzo per impieghi impropri. Sono ammesse leggere differenze di colore tra differenti partite.</p> <p>The overmentioned data correspond to average values communicated in good faith, but they cannot be considered as a contract document. The product use has to be considered in term of what has to be realized. The product cannot be held up responsible when it is improperly use. Slight colors differences among several lots are admitted.</p>		