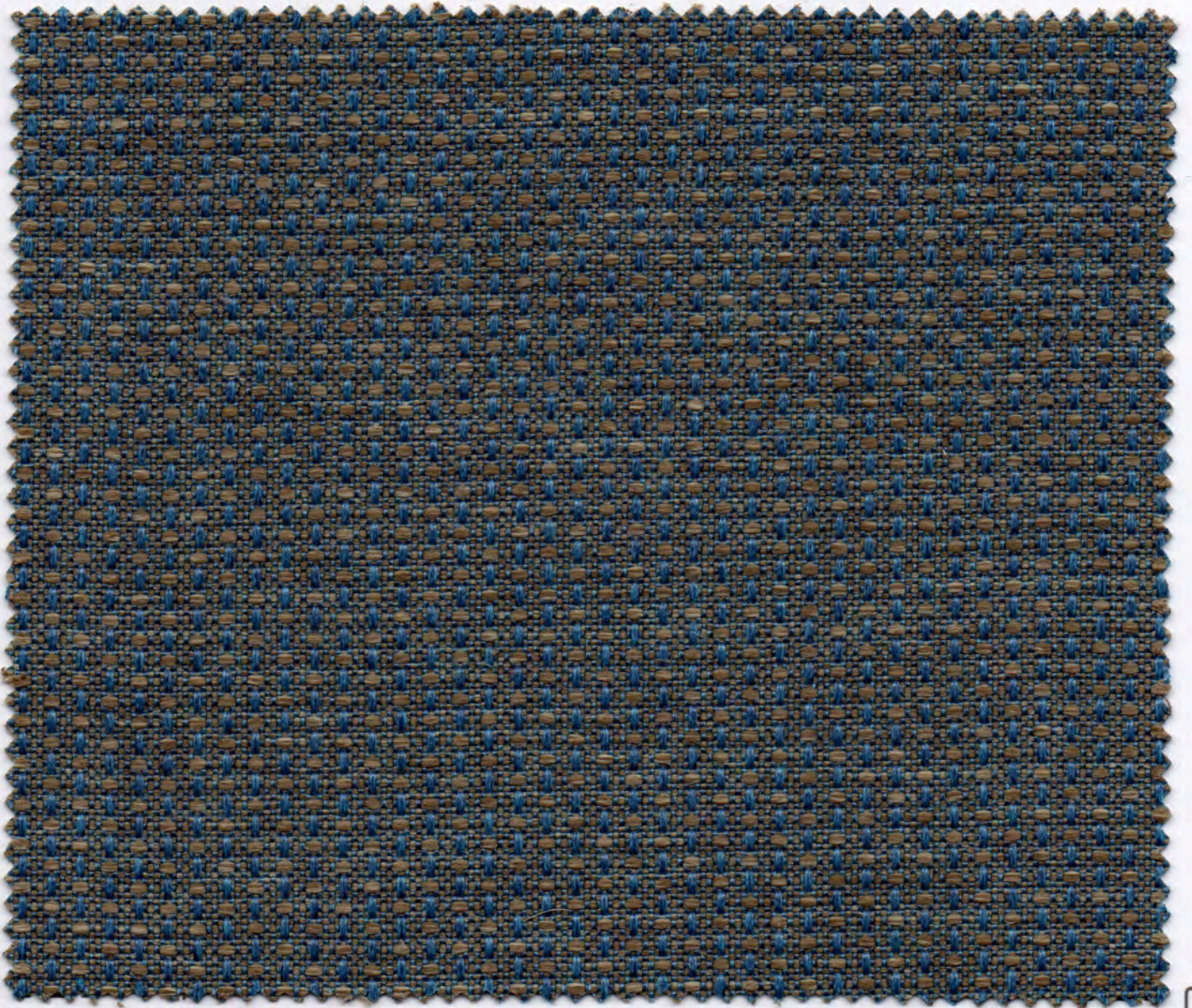
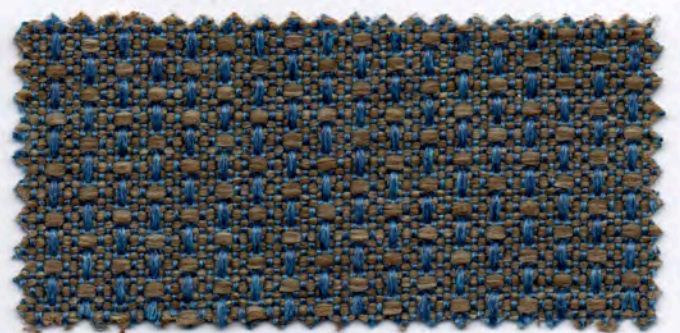


# ANGEL JUMBO

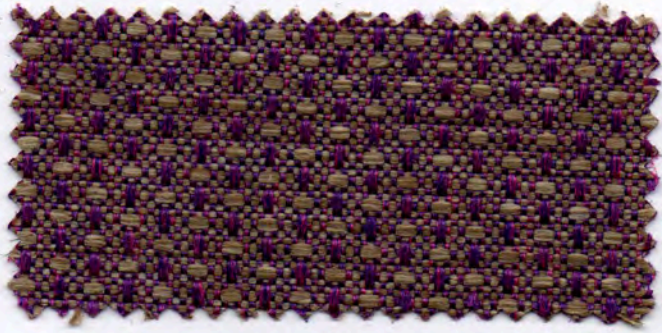


700



706

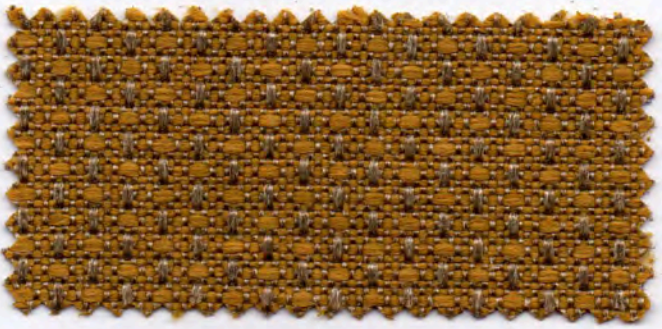




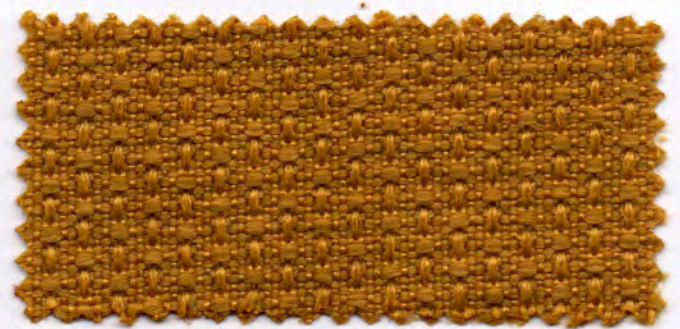
904



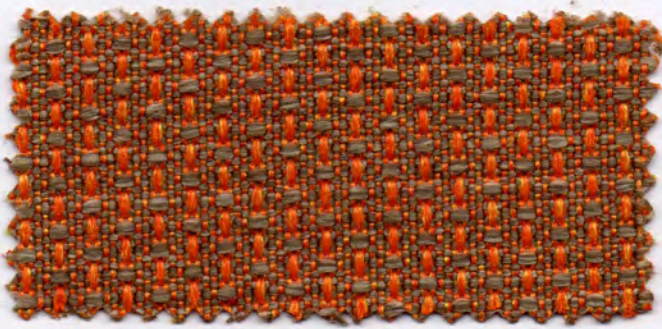
900



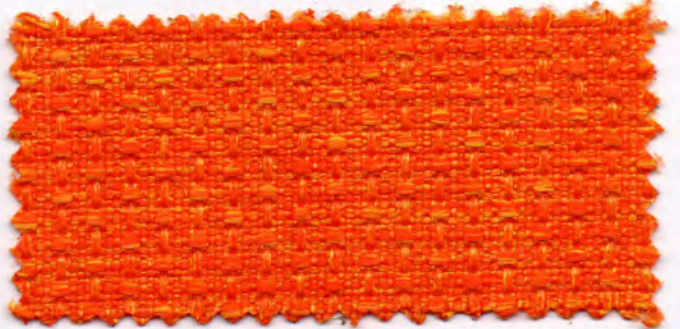
504



500



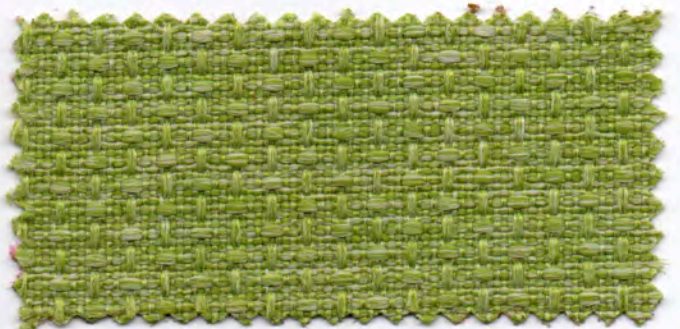
308



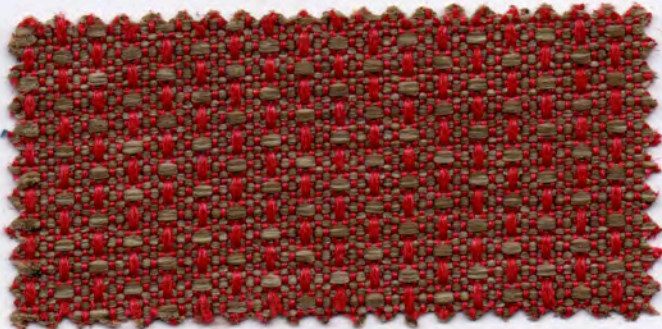
307



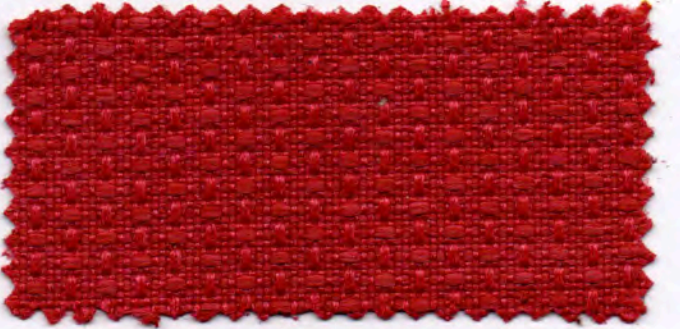
803



800



302

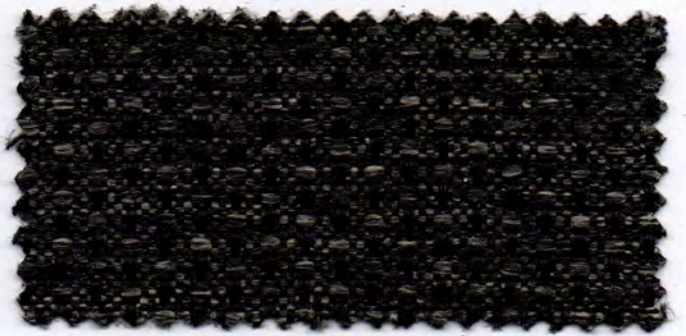


300

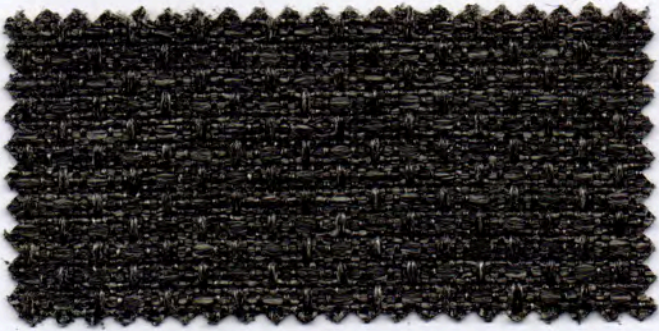




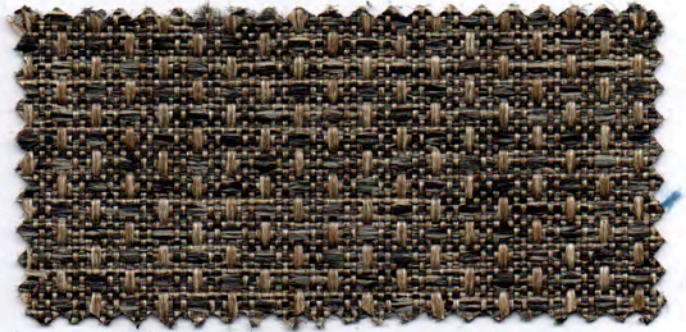
200



201



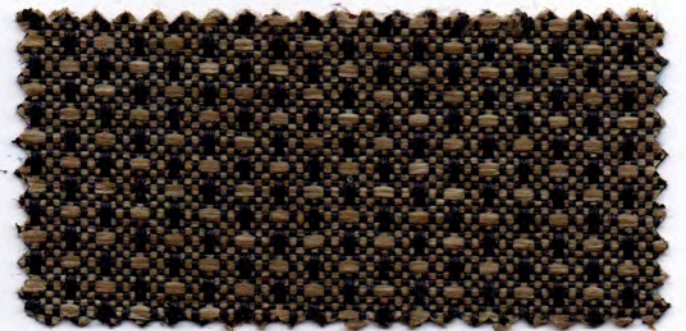
601



407



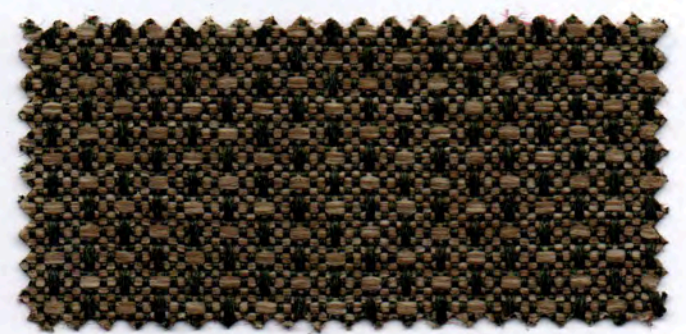
701



702



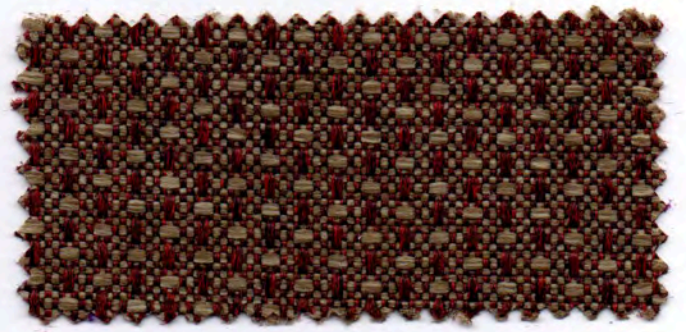
801



802

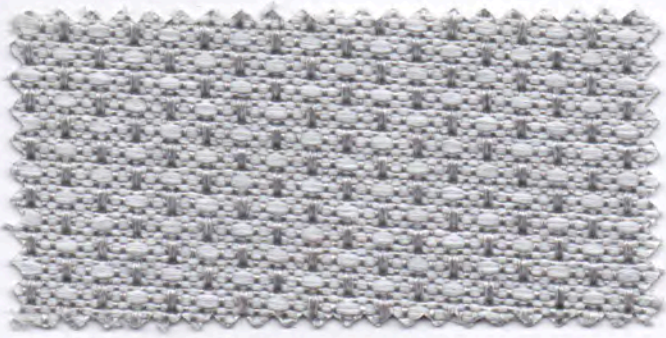


301



303

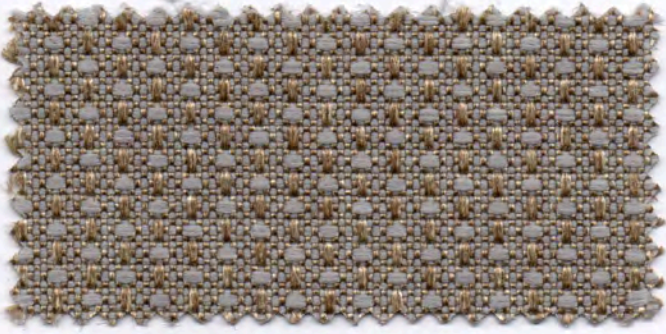




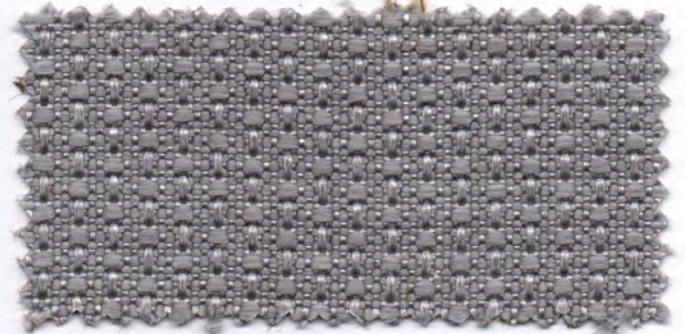
100



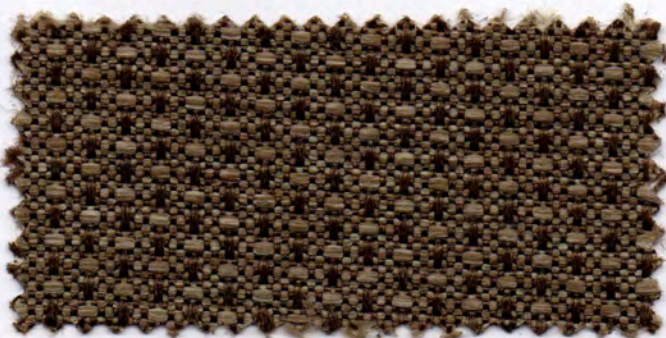
111



401



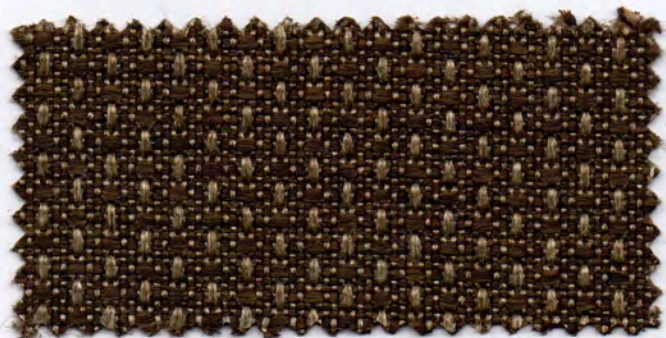
600



402



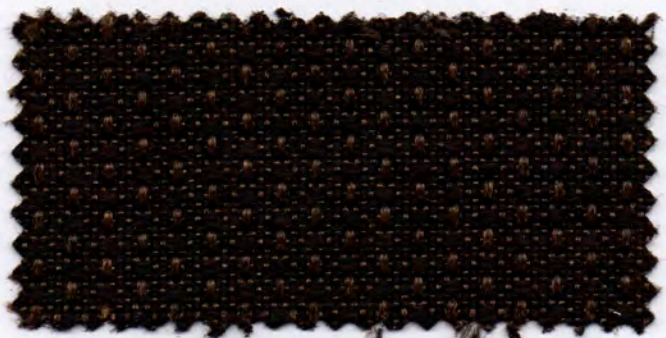
400



403



404



406



405





caratteristiche tecniche - technical details	
composizione composition	100% PP FR (nativa)
altezza width	140 cm ± 2%
peso weight	350 gr/m <sup>2</sup> ± 5%
solidità delle tinte alla luce artificiale color fastness to artificial light xeno - ISO 105 B02	4-5
solidità delle tinte allo sfregamento color fastness to rubbing crock meter - ISO 105 X12	secco / dry 5 umido / wet 4/5
resistenza al pilling pilling resistance ISO 12945-2	4/5
resistenza allo scorrimento fili seam slippage ISO 13936-2	1,50 mm
resistenza all'abrasione abrasion resistance martindale - ISO 12947-2	≥ 33.000 cicli / rubs
resistente a resistant to	<b>questo filato è:</b> idrorepellente - antistatico anallergico - antibatterico - irrestingibile <b>this yarn is:</b> water repellent - antistatic hypoallergenic - antibacterial - no-shrink
norme di manutenzione cleaning	
nota bene please note	consigliato lavaggio a secco dry clean suggest
ATTENZIONE WARNING	Articolo non idoneo all'uso esterno/outdoor Not suitable for external/outdoor use
resistenza al fuoco (la resistenza al fuoco dipende dal tipo di schiuma utilizzata)  fire retardant (flame retardant performance is dependent upon the foam used)	Italia Italy UNI 9175 Class 1IM
	Europa Europe EN 1021:2006 - 1 EN 1021:2006 - 2
	Inghilterra England BS 5852 IS 11 (CRIB 5)
	Francia France NF D 60-013:2006 (art. AM 18)
	Stati Uniti U.S.A. California TB 117:2013
	Navale Nautical FTP Code 307(88):10 Annex 1 Part 8
<p>Questi valori sono dati a titolo indicativo e in buona fede e non possono considerarsi in alcun caso vincolanti. L'impiego del prodotto deve essere valutato in base a ciò che si deve realizzare. Non si risponde del suo utilizzo per impieghi impropri. <b>Sono ammesse leggere differenze di colore tra differenti partite.</b></p> <p>The overmentioned data correspond to average values communicated in good faith, but they cannot be considered as a contract document. The product use has to be considered in term of what has to be realized. The product cannot be held up responsible when it is improperly use. <b>Slight colors differences among several lots are admitted.</b></p>	