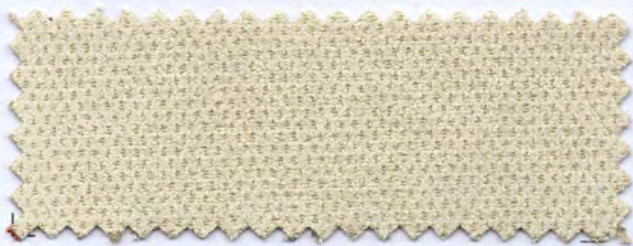
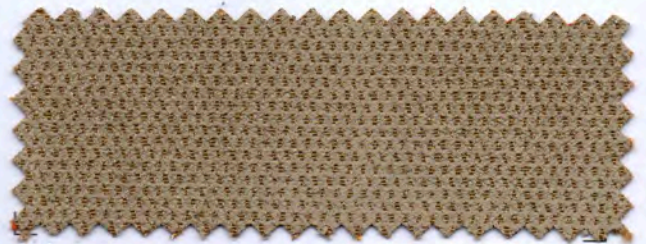


DANDY

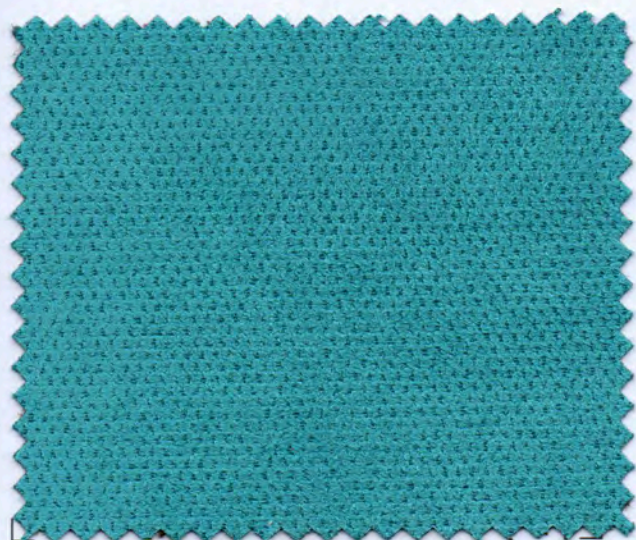


400

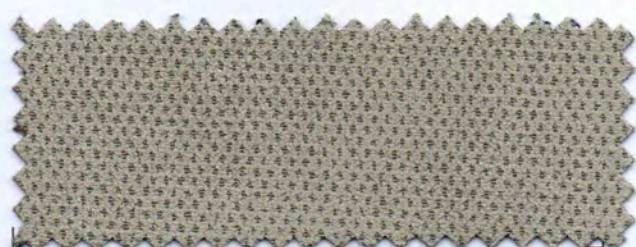


402





711



401



603



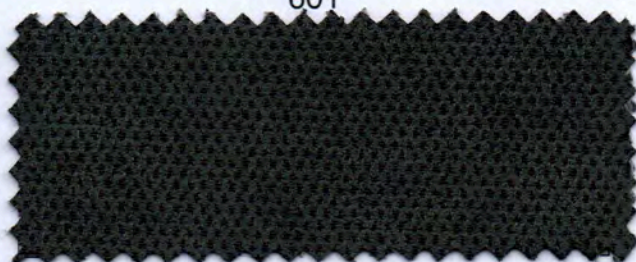
702



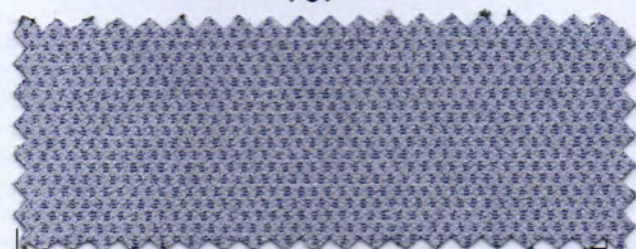
601



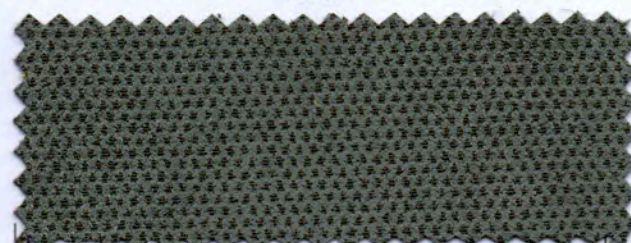
707



200



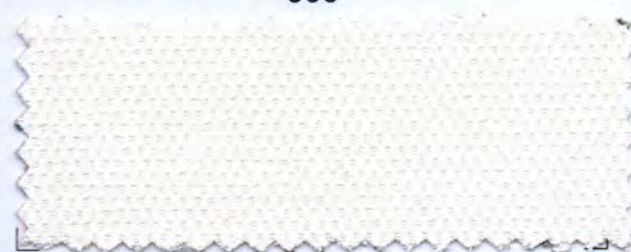
001



600



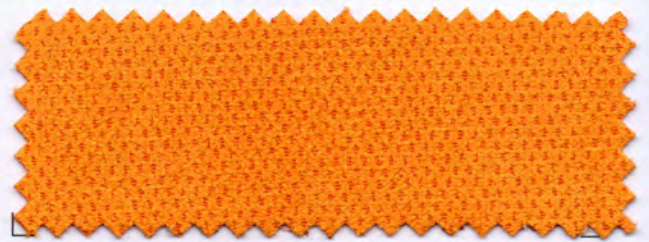
003



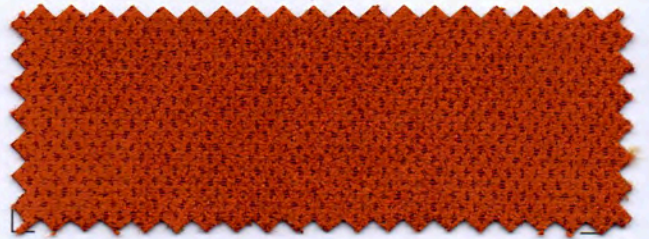
111



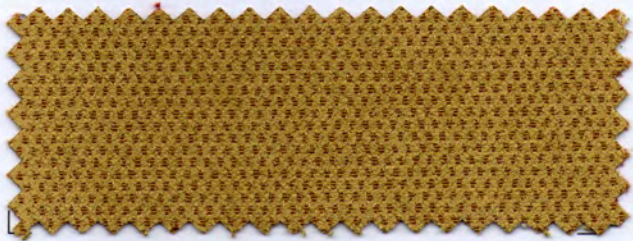
511



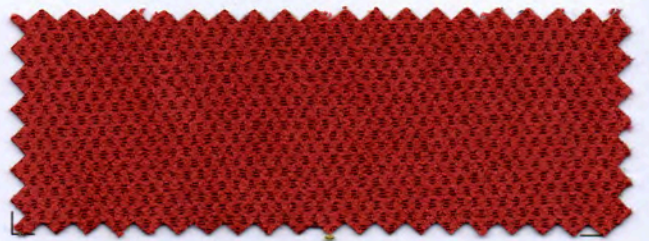
301



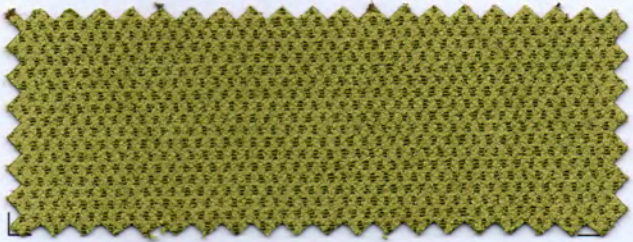
307



804



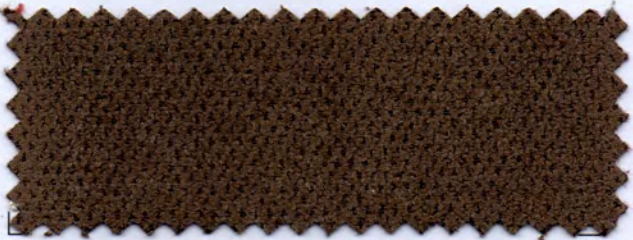
304



811



912



404




004



405



002

caratteristiche tecniche - technical details	
composizione composition	100% PL
altezza width	140 cm
peso weight	223 gr/m <sup>2</sup> ± 3%
solidità delle tinte allo sfregamento colour fastness to rubbing crockmeter - ISO 105 X 12	secco / dry            5 umido / wet            4
solidità delle tinte alla luce artificiale color fastness to artificial light xeno - ISO 105 B 02	4 - 4/5
resistenza al pilling pilling resistance ISO 12945-2	5
resistenza all'abrasione abrasion resistance martindale - UNI ISO 12947-2	40.000 cicli / rubs (end point)
norme di manutenzione cleaning	
resistente a resistant to	smacchiabile - irrestingibile - idorepellente stain cleanable - no shrink - water repellent

Alcuni coloranti per l'abbigliamento e accessori (es. jeans) possono migrare verso i colori chiari di questo articolo. Questo fenomeno aumenta con l'umidità e la temperatura. non si assume alcuna responsabilità per il trasferimento di colori causato.  
Some dyes for clothing and accessories (ex. jeans) may migrate to the bright colors of this article. This phenomenon increases with the humidity and the temperature. assumes no responsibility for the transfer of colors caused.

Questi valori sono dati a titolo indicativo e in buona fede e non possono considerarsi in alcun caso vincolanti. L'impiego del prodotto deve essere valutato in base a ciò che si deve realizzare. Non si risponde del suo utilizzo per impieghi impropri. Sono ammesse leggere differenze di colore tra differenti partite.  
The overmentioned data correspond to average values communicated in good faith, but they cannot be considered as a contract document. The product use has to be considered in term of what has to be realized. The product cannot be held up responsible when it is improperly use. Slight colors differences among several lots are admitted.