

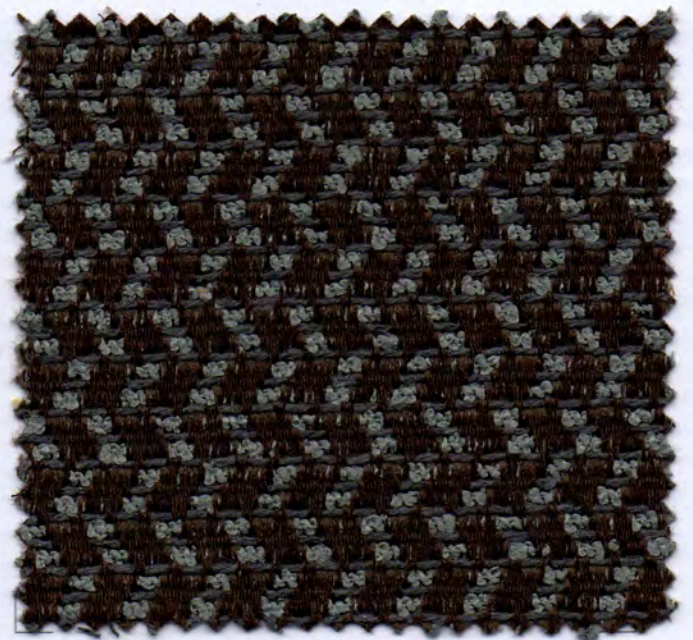
# LEGEND . ACHILLE



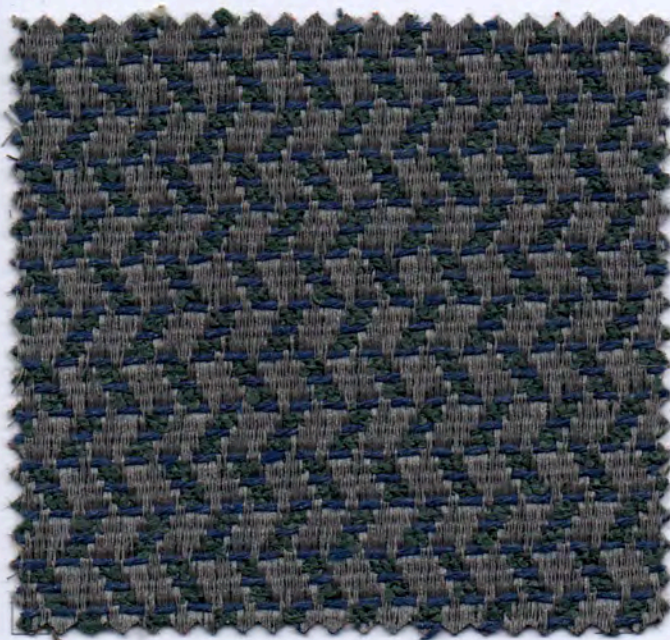




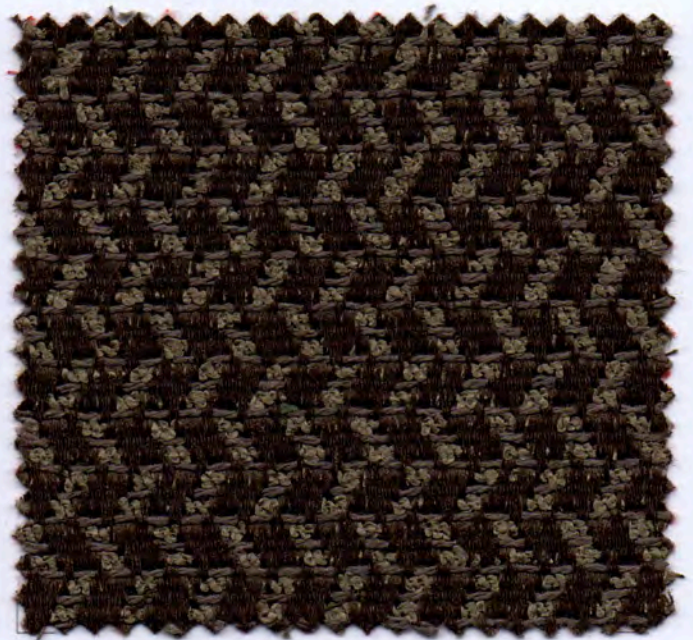
403



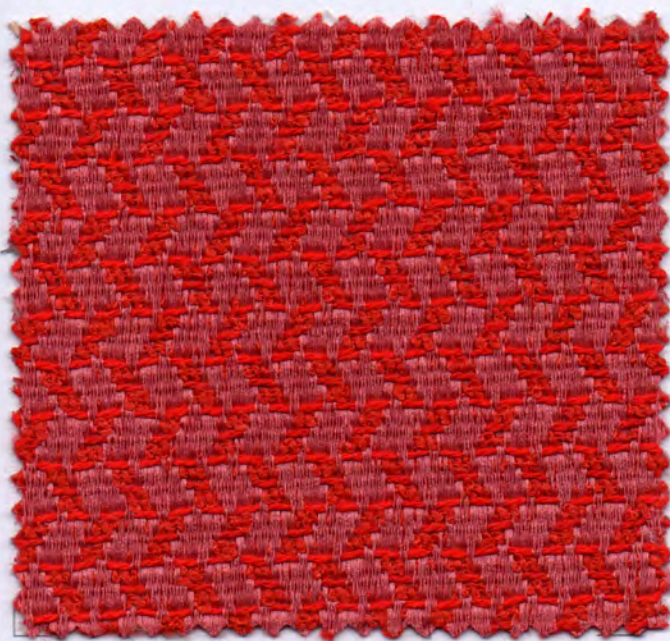
406



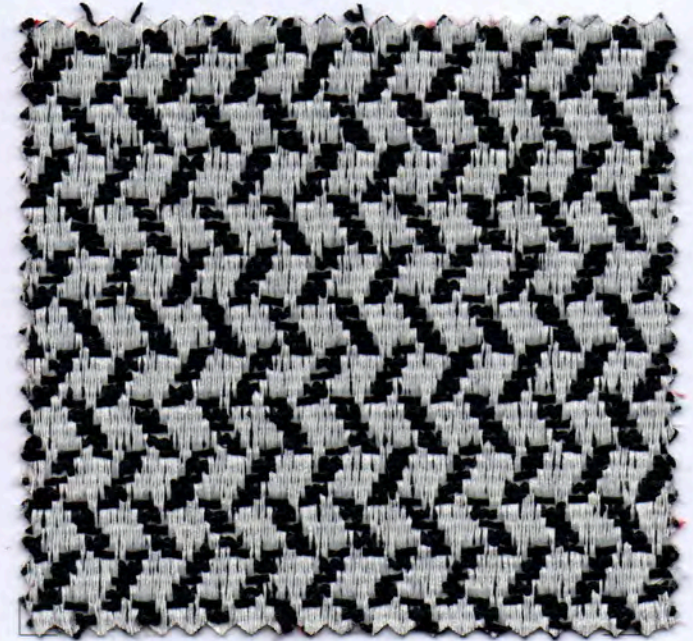
701



405

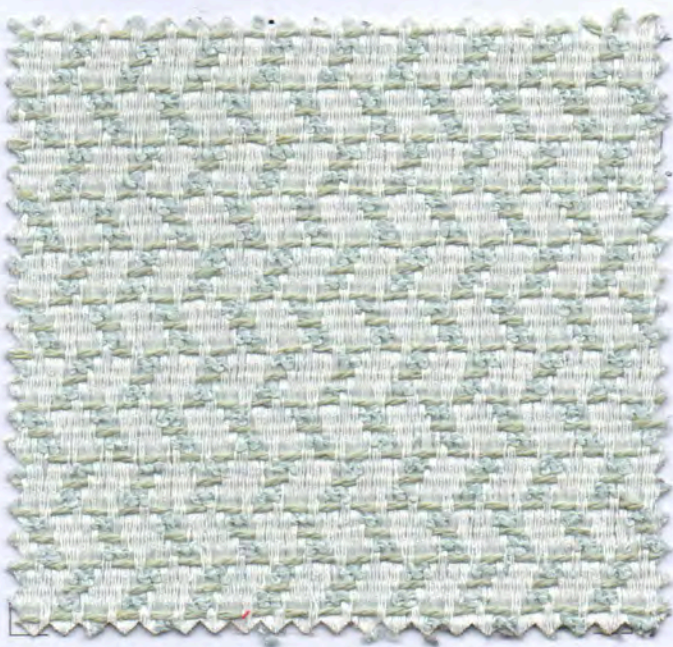


901



102

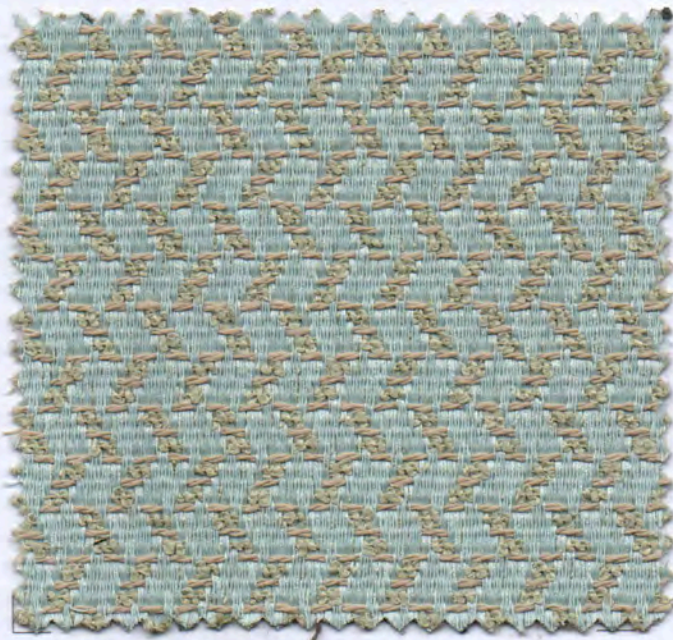




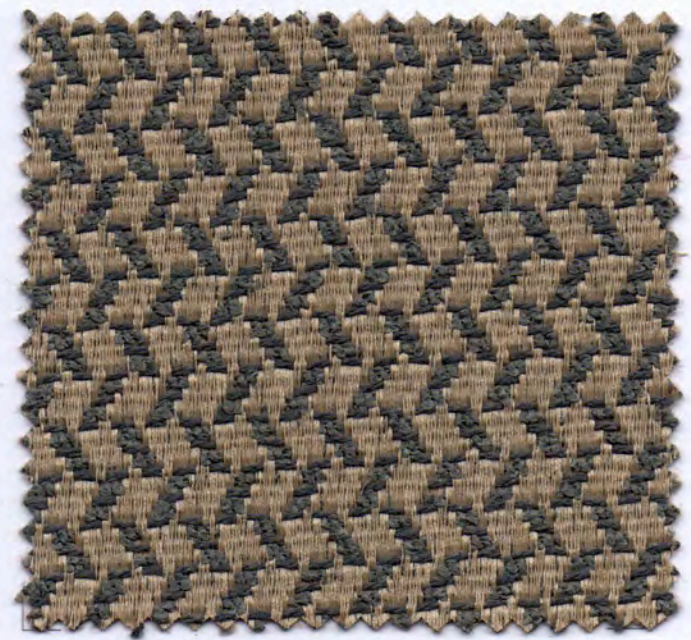
600



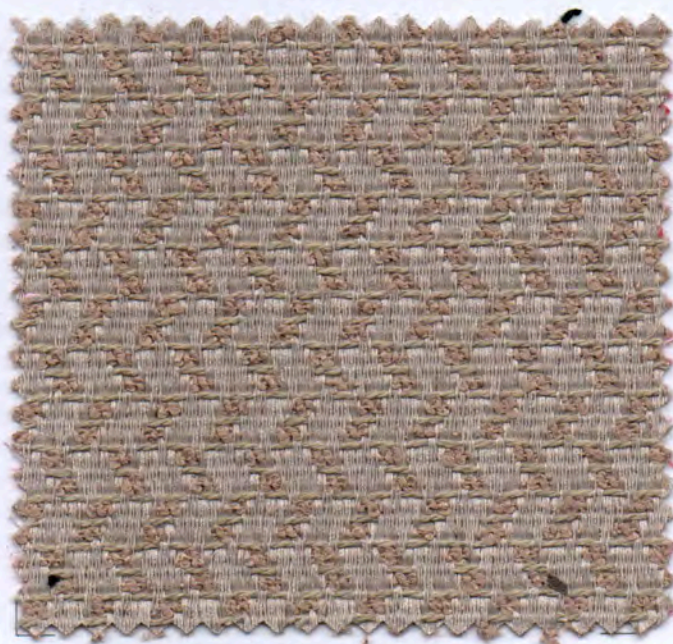
602



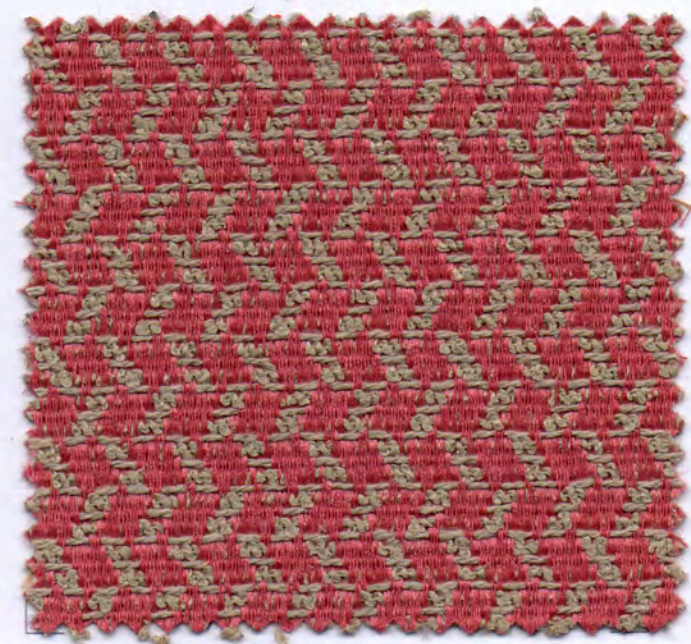
700



411

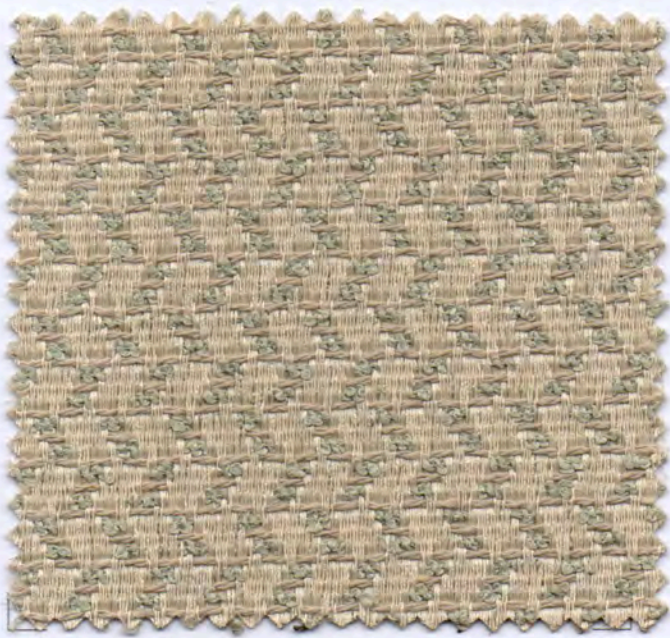


001

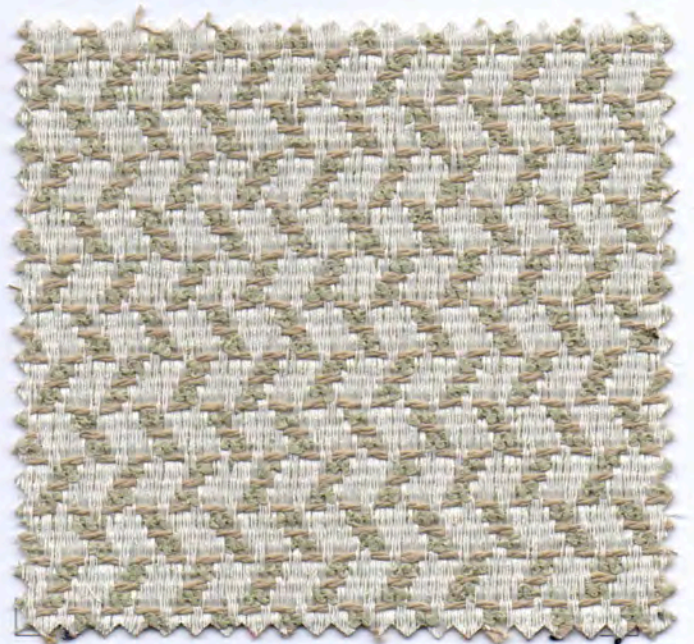


900





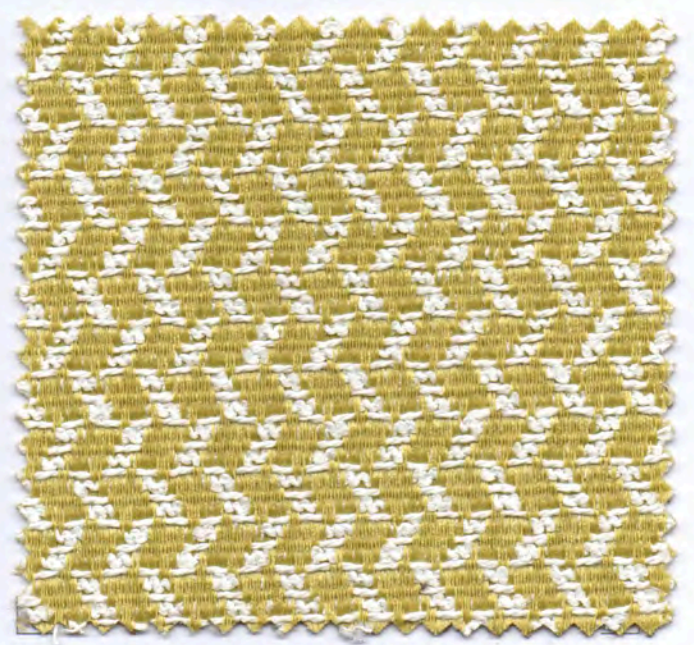
400



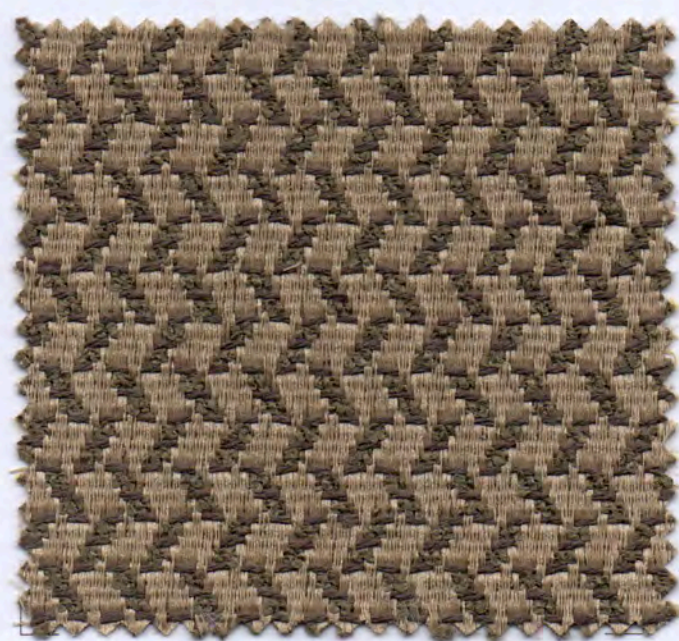
601



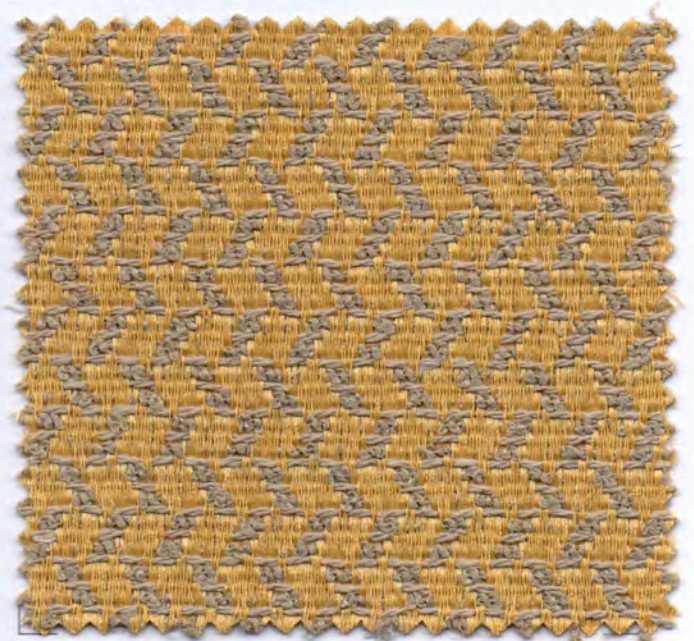
805



804





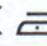

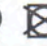
412



501



# LEGEND . ACHILLE

caratteristiche tecniche - technical details	
composizione composition	79% PL - 21% CO
altezza width	140 cm
peso weight	300 gr/m <sup>2</sup> ± 4%
solidità delle tinte allo sfregamento colour fastness to rubbing rock meter - ISO 105 X12	secco / dry            4 umido / wet            4
resistenza allo scorrimento dei fili seam slippage ISO 13936-2	2,5 mm
resistenza al pilling pilling resistance ISO 12945-2	4
resistenza all'abrasione abrasion resistance martindale - UNI ISO 12947-2	> 45.000 cicli / rubs (end point)
norme di manutenzione cleaning	     non centrifugare do not centrifuge
calo shrinkage	± 2%
nota bene please note	idrorepellente water repellent

Questi valori sono dati a titolo indicativo e in buona fede e non possono considerarsi in alcun caso vincolanti. L'impiego del prodotto deve essere valutato in base a ciò che si deve realizzare. Non si risponde del suo utilizzo per impieghi impropri. Sono ammesse leggere differenze di colore tra differenti partite.

The overmentioned data correspond to average values communicated in good faith, but they cannot be considered as a contract document. The product use has to be considered in term of what has to be realized. The product cannot be held up responsible when it is improperly use. Slight colors differences among several lots are admitted.

